

Find us

The Clifden Centre is located on the Clifden Road side of the Homerton Hospital (see map).

What happens when I arrive?

- Please check-in with reception at the Clifden Centre and say you have an appointment with Open Doors.
- If it is your first visit you will be asked to fill in a form with your name, date of birth and contact details of your choice.
- We do not require GP contact details.
- We will not share your information with anyone else.
- You will be asked to take a seat until you are called for your appointment.
- We aim to see you as close as possible to your arrival time. If you are having a full sexual health check up and contraception please allow one to two hours for your visit.


Open Doors

Sexual Health Clinic Homerton

**Homerton University Hospital NHS
Foundation Trust**
Clifden Centre
Homerton Row
London
E9 6SR

Appointments and Walk in
Thursday 9.30 am–12.00 midday
Contact Sarah on 07984 401 346
Free and Confidential

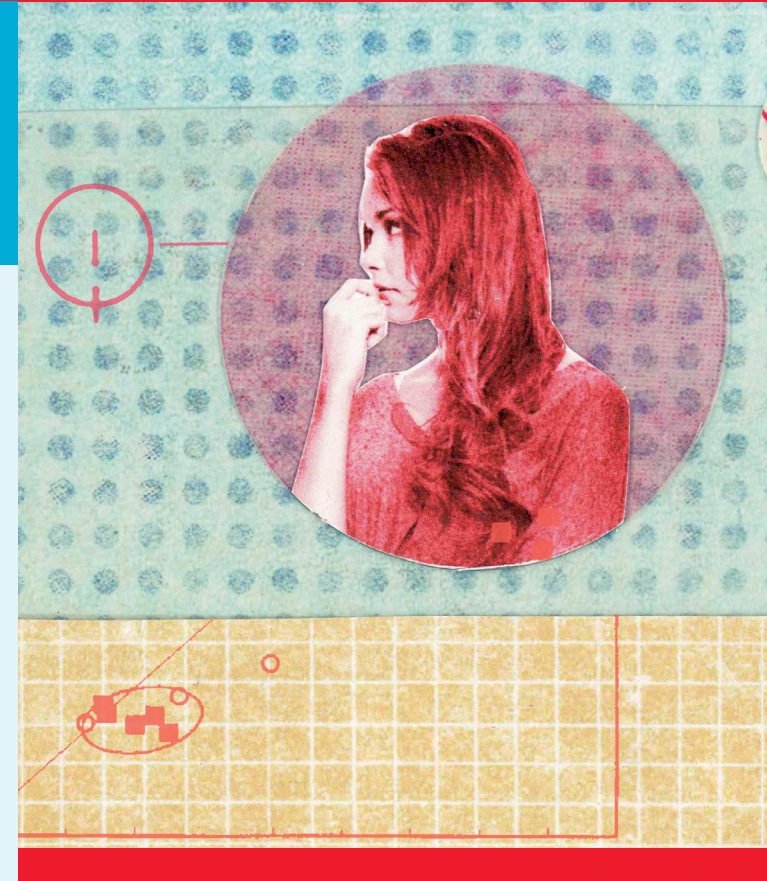
Follow us

Website www.opendoors.nhs.uk
Email opendoors@homerton.nhs.uk
 [@opendoorsnhs](https://twitter.com/opendoorsnhs)

Patient Advice and Liaison Service (PALS)

Please contact PALS if you have any concerns, suggestions or compliments about the service.

Email pals@homerton.nhs.uk



Open Doors

Sexual Health Clinic Homerton

Homerton University Hospital 
NHS Foundation Trust

Open Doors is a free and confidential service for anyone working in the sex industry.

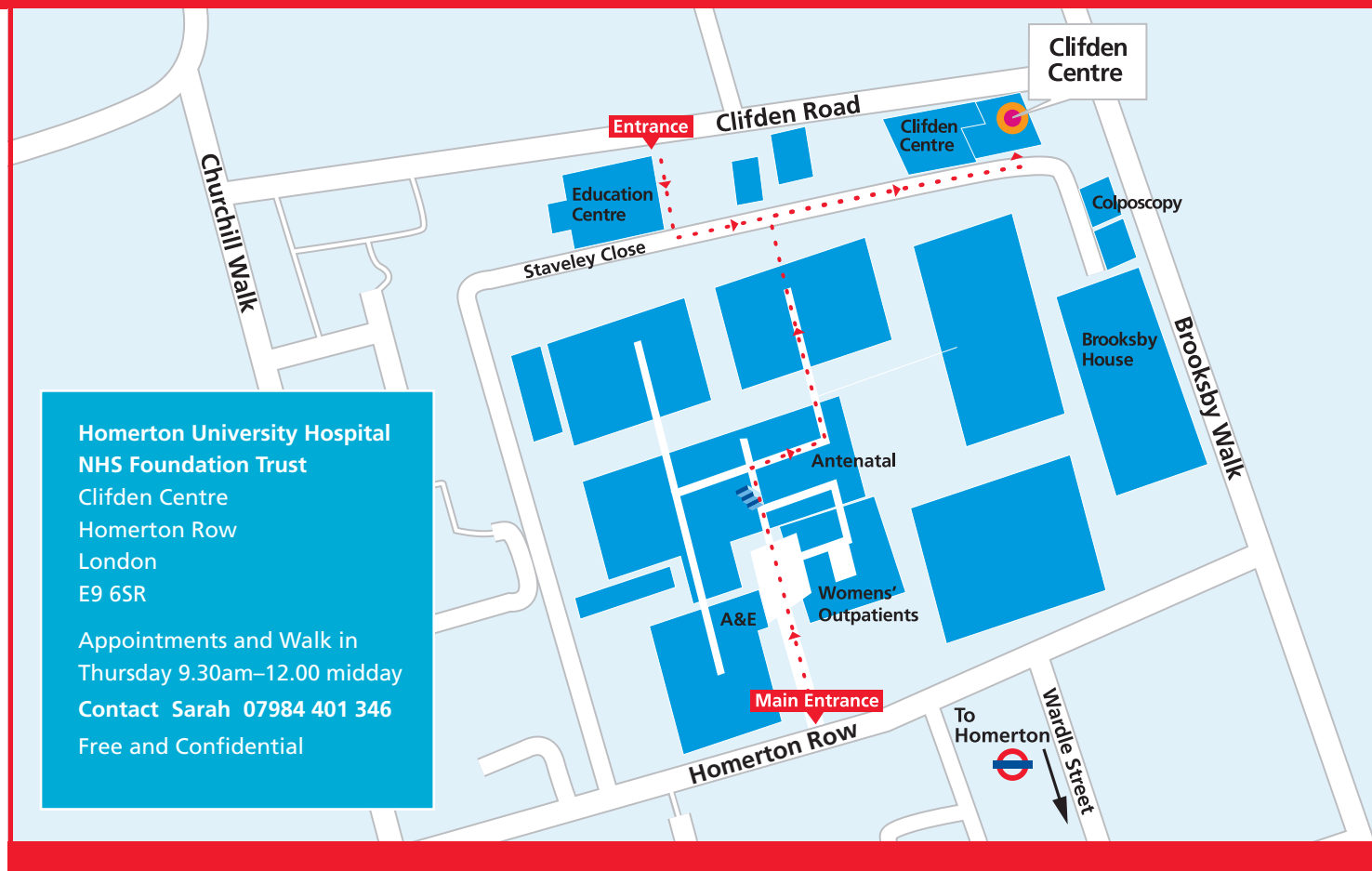
We never give any information about you to anyone else.

We provide:

- Sexual health testing and treatment
- Contraception
- Emergency contraception
- Pregnancy testing
- HIV testing
- Hepatitis B vaccinations
- Cervical screening
- Free condoms, lubricant, dams, sponges and finger cots
- Referral to support services including counselling
- Ugly Mug information

We offer telephone translation service in your language.

Find out more at www.opendoors.nhs.uk



Transport

Rail

Homerton Hospital is a 5 minute walk from Homerton Station using the East London Overground line from Highbury and Islington or Stratford.

Buses

(stop outside or nearby): 242, 26, 30, 308, 488, 425, 276, 394, 236

Parking

Parking meters are located in the streets around the Hospital.